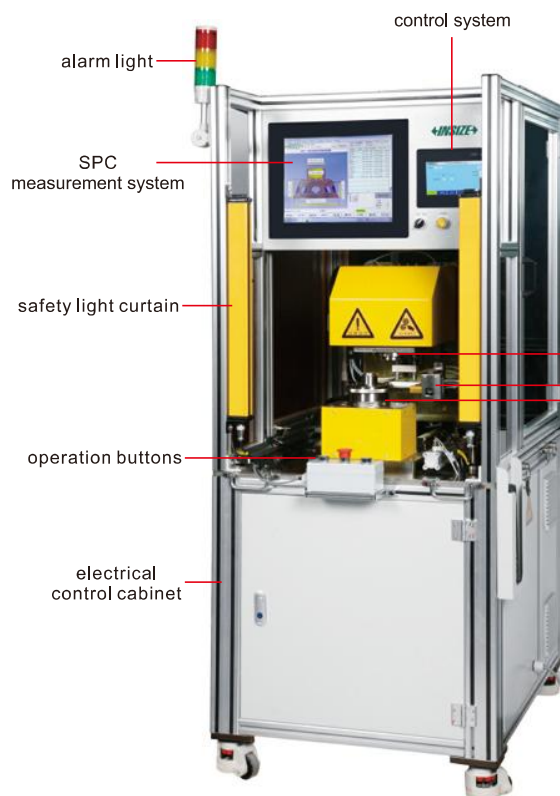


## SEMI-AUTO MEASUREMENT STATION CODE ATU-01A

CUSTOMIZED ACCORDING  
TO WORKPIECES



inductive probe



measurement device

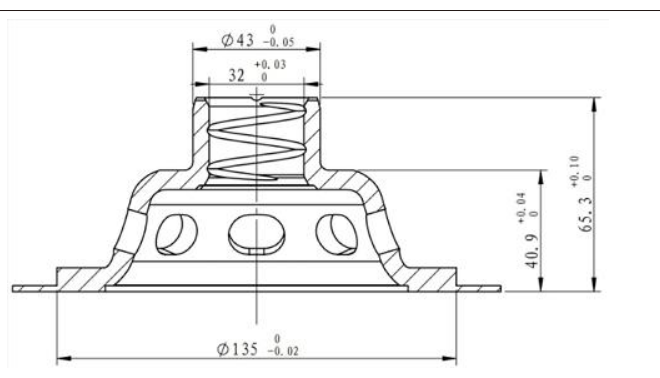


workpiece fixing device

- Inductive probe with control system and SPC measurement system to complete the workpiece measurement
- Manual placement of calibration and workpiece, automatic scanning of workpiece QR code, QR code is automatically associated with the inspection program
- Automatic calibration and measurement with manual start button



measured workpiece



drawing of the measured workpiece

### SPECIFICATION

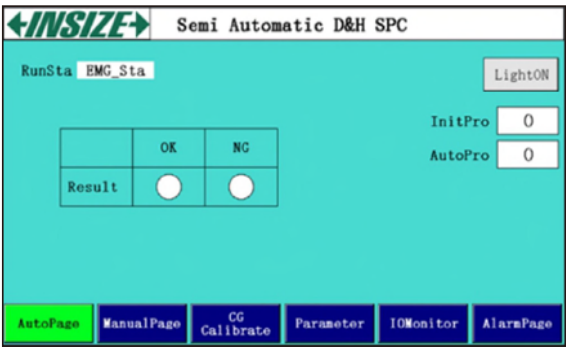
Repeatability	3 $\mu$ m
Measurement cycle time	8s
Power supply	AC 220V, 50Hz
Air supply	0.45-0.7Mpa

### STANDARD DELIVERY

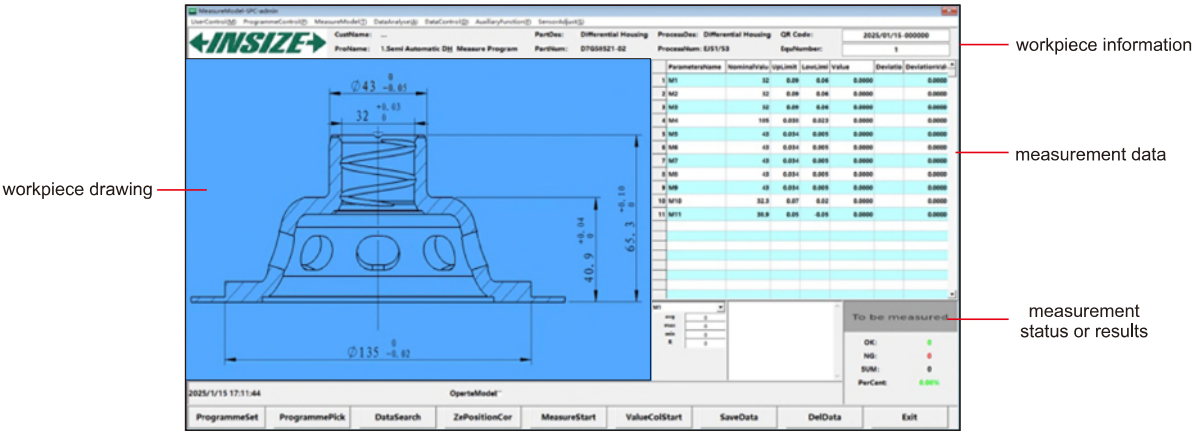
Measurement mechanism	1 set
Electric control cabinet	1 set
Industrial computer	1 pc
Automatic scanner	1 pc
SPC measurement system	1 set
Control system	1 set

Control system

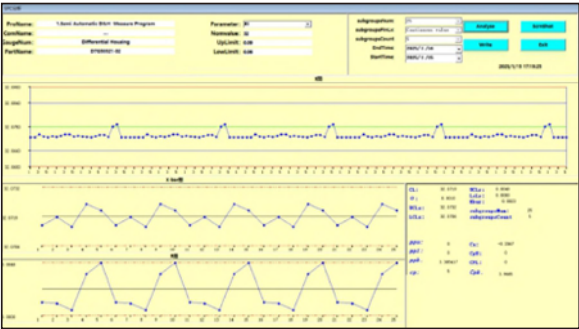
- Commissioning of measurement programs and control of measurement items
- Monitoring of measurement status, alarms for abnormal conditions



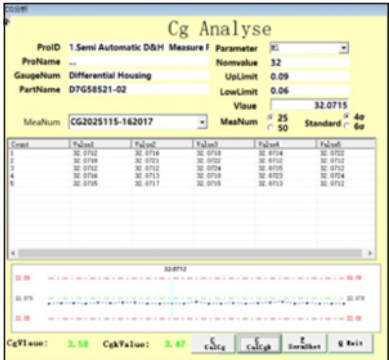
SPC measurement system



- Simultaneous display of measurement data and automatic judgment of measurement results (green when within tolerance, red when out of tolerance)
- Measurement data can be analyzed by SPC, CG and GRR
- Measurement data can be exported to Excel report



SPC analysis



CG analysis



GRR analysis